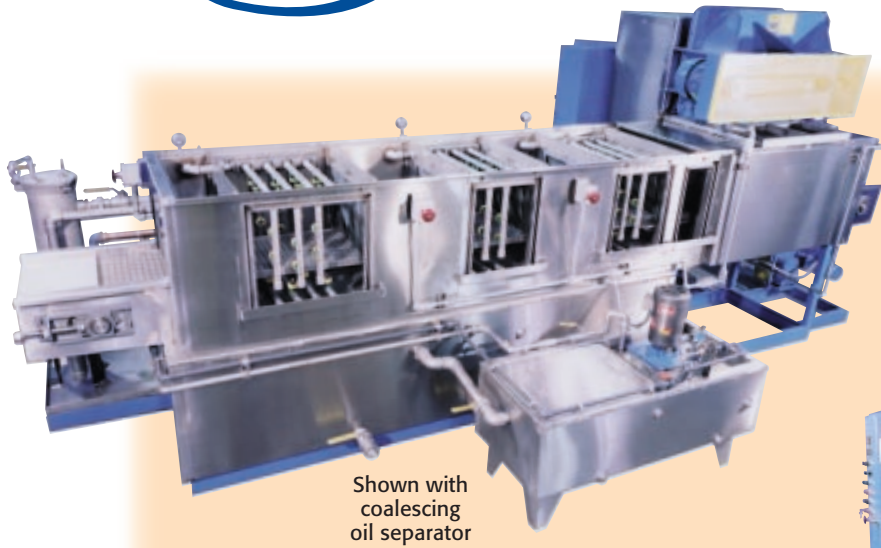


Aqueous Spray Parts Washer



Shown with
coalescing
oil separator

*Out-Cleans, Out-Dries
and Out-Produces Any
Comparably-Sized Machine...
Guaranteed*

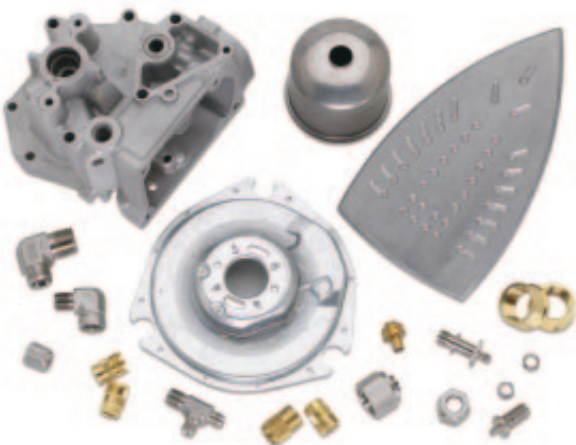


Make Automated Cleaning Part of Your Production Line

JENFAB's Aqueous Spray Parts Washer Systems are designed to convey parts through cleaning, rinsing, inhibiting and other processing spray applications such as phosphating. These systems provide efficient processing of parts on a continuous basis. Parts move through a series of stages in which high-pressure, high-volume spray impingement loosens and removes chips, fines, oil, and various soils.

Customer-Driven Features

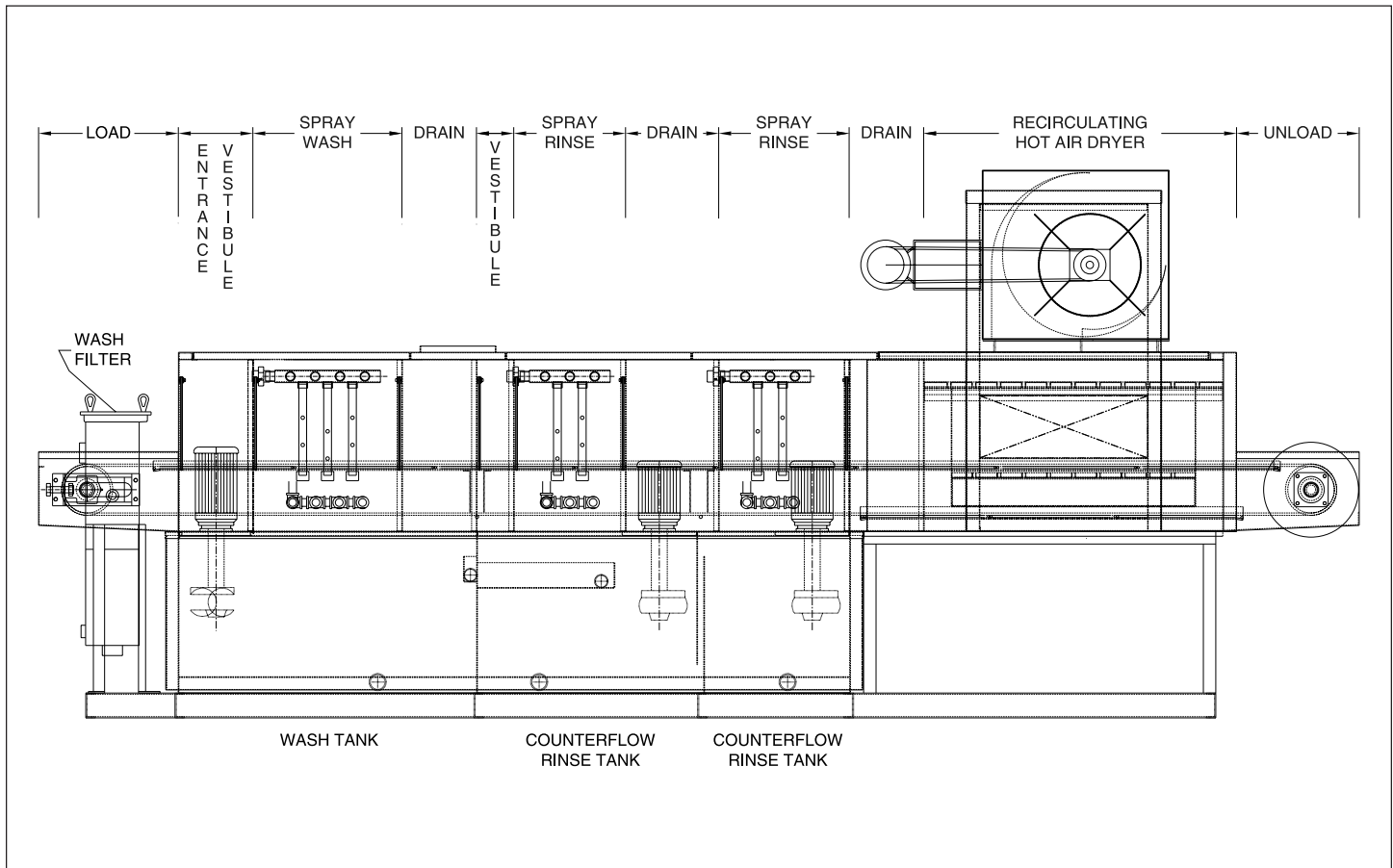
- 304 stainless steel wetted surfaces for longest life
- JENFAB unique belt support grillage
- Engineered, overlapping spray pattern
- Quick disconnect spray headers and nozzles
- Maximum drain areas and pre-spray vestibules to minimize dragover and tank contamination
- Baffles and air knives to contain solution between each section for minimal solution dragover
- Available with either high pressure blow-off or energy efficient recirculating convection air dryer for maximum drying in minimal time
- Recirculating dryer option offers 70 to 80% reduction in energy requirements as compared to conventional, non-recirculating, blow-off type dryers
- Leak-proof side enclosure doors and a completely removable top of belt enclosure simplify routine maintenance and troubleshooting, providing total system access



Jensen Fabricating Engineers, Inc.

555 Wethersfield Rd., Berlin, CT 06037
 Phone: (860) 828-6516 Fax: (860) 828-0473
<http://www.jenfab.com>

Aqueous Spray Parts Washer



DIMENSIONS

Spray Zones from 12" to 144"

Working Height: 42" for Load - Nominal

Discharge Height: 42" - Nominal

Conveyor Width: 6" to 72"

SPECIFICATIONS

- All 304 stainless steel construction on wetted surfaces
- Spray headers with a variety of nozzles
- All nozzles are stainless steel quick disconnect
- Baffles between sections to minimize overspray
- Tanks equipped with bottom and top overflow fittings
- Vertical in-tank sealess pumps
- Pumps protected with dual removable screen
- Single point connections for all utilities
- Indicating temperature controls
- Unique JENFAB belt support grillage
- Full drain areas before and after spray zones
- 2" fiberglass insulation on tanks and dryers
- Lift off tank covers
- Tank bottoms sloped for 100% drainage
- Energy efficient recirculating hot air dryer
- Solution level control system
- Liquid filled pressure gauges and control valves
- Full run-off prior to shipping

OPTIONS

- In-Line Filtration
- Chip Baskets
- Air knives between stages minimize solution carryover
- Spot free drying
- Closed loop and wastewater minimization systems available including UF, RO and evaporation technology
- Oil Coalescer
- Programmable Controllers
- Various Conveyance Options available
- Tank clean out doors
- Exhaust duct and fan
- Variable conveyor speed

*Specifications subject to change without notice.



Jensen Fabricating Engineers, Inc.

555 Wethersfield Rd., Berlin, CT 06037

Phone: (860) 828-6516 Fax: (860) 828-0473

<http://www.jenfab.com>